

Subchondral Cellular Density Decreases with Increasing Grade of Cartilage Degeneration in Knee Osteoarthritis – An Ex vivo Histopathological Analysis

Sathish Muthu^{1,2,3}, Ragavi Kandasamy⁴, Suryaprabha Palanisamy⁴, Arun Anand Palaniappan¹

Learning Point of the Article:

Subchondral cell density decreases significantly with increasing grade of degeneration in knee osteoarthritis.

Abstract

Introduction: Subchondral milieu has been the region of interest in recent clinical trials demonstrating it as an effective treatment focus in knee osteoarthritis (OA). However, a systematic analysis of the subchondral cell population density is lacking in knee OA. Hence, this study aims to analyze the cell population density of the subchondral zone for every stage of cartilage degeneration to analyze the rationale behind this evolving treatment method for knee OA.

Materials and Methods: This is an ex vivo histopathological analysis of the distal femur and proximal tibia articular specimens from the patients undergoing total knee replacement for primary knee OA between November 2023 and March 2024. Two pathologists independently graded and analyzed the subchondral cell density based on the International Cartilage Repair Society cartilage injury grading system.

Results: We noted a significant association between the grade of cartilage degeneration and the subchondral cell density ($r = 0.831$, $P < 0.001$). We noted a statistically significant decrease in the cell density for every stage of cartilage injury compared to the control ($P < 0.001$). We also noted a significant decrease in cell density between the early and late stages of cartilage degeneration ($P < 0.001$). We did not note any significant difference in the cell density between the tibial and femoral articular cartilage for every grade of cartilage degeneration analyzed ($P = 0.432$).

Conclusion: Subchondral cell density decreases significantly with increasing grade of degeneration in knee OA. Subchondral milieu warrants attention to be considered as a potential treatment focus that could alter the disease progression in knee OA.

Keywords: Histopathology, knee osteoarthritis, subchondral zone, mesenchymal stromal cells, regenerative medicine.

Introduction

Osteoarthritis (OA) of the knee is a progressive degenerative condition that significantly impacts joint biomechanics and quality of life, leading to disability and pain [1]. Despite being a pure cartilage disease, it rather affects various other regions of the joint from outer capsular synovium to subchondral regions. Hence, it could be called as a whole joint disease [2]. Bone marrow lesions are considered to be one of the hallmark characteristic features of OA that occurs before articular cartilage

degeneration. This has led to a new stream of management methods targeting subchondral regions with growth factors and cell substitutes. In recent years, cellular therapy modalities utilizing autologous or allogeneic cultured mesenchymal stromal cells (MSCs) have emerged as a promising alternative in the landscape of regenerative therapies [3].

Utilization of bone marrow concentrates rich in MSCs, and growth factors have been considered one of the first-line treatments in the early OA targeting the bone marrow lesions and

Access this article online

Website:
www.jocr.co.in

DOI:
<https://doi.org/10.13107/jocr.2025.v15.i02>

Author's Photo Gallery



Dr. Sathish Muthu



Dr. Ragavi Kandasamy



Dr. Suryaprabha
Palanisamy



Dr. Arun Anand
Palaniappan

¹Department of Orthopaedics, Government Medical College, Karur, Tamil Nadu, India,

²Department of Biotechnology, Faculty of Engineering, Karpagam Academy of Higher Education, Coimbatore, Tamil Nadu, India,

³Orthopaedic Research Group, Coimbatore, Tamil Nadu, India,

⁴Department of Pathology, Government Medical College, Karur, Tamil Nadu, India.

Address of Correspondence:

Dr. Sathish Muthu,

Department of Orthopaedics, Government Medical College, Karur, Tamil Nadu, India.

E-mail: drsathishmuthu@gmail.com

Submitted: 05/11/2024; Review: 15/12/2024; Accepted: January 2025; Published: February 2025

DOI: <https://doi.org/10.13107/jocr.2025.v15.i02>

This is an open access journal, and articles are distributed under the terms of the Creative Commons Attribution-NonCommercial-ShareAlike 4.0 License <https://creativecommons.org/licenses/by-nc-sa/4.0/>, which allows others to remix, tweak, and build upon the work non-commercially, as long as appropriate credit is given and the new creations are licensed under the identical terms



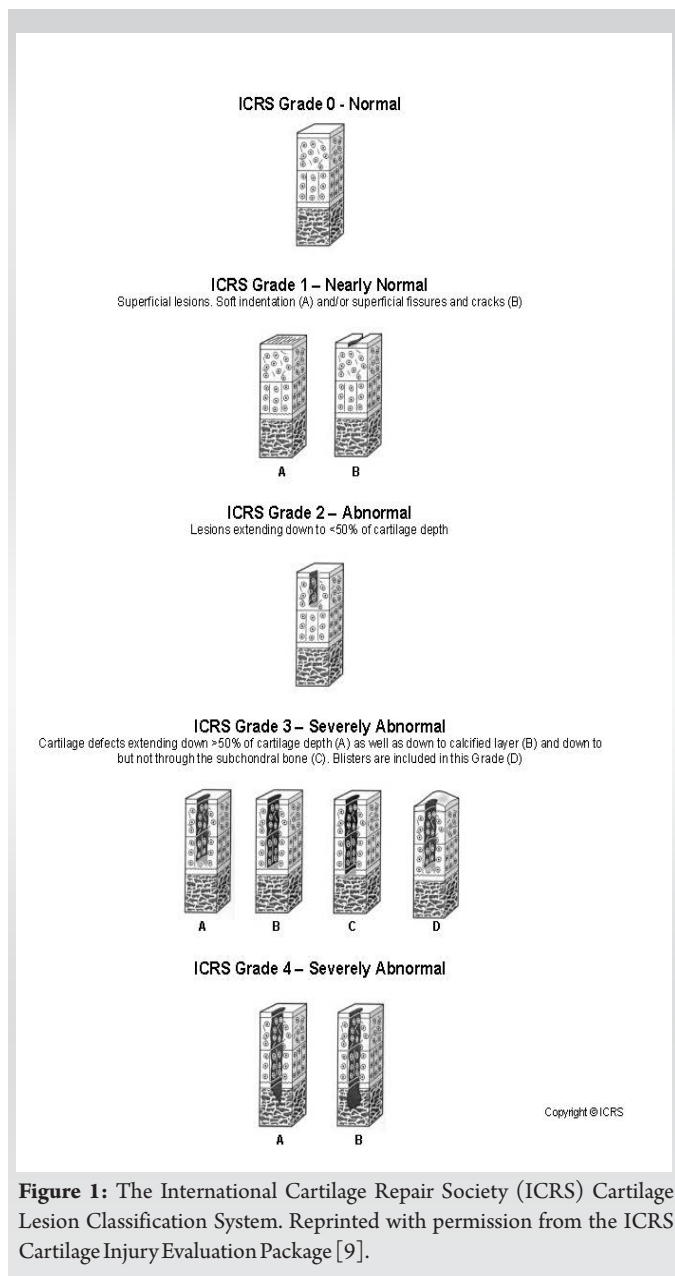


Figure 1: The International Cartilage Repair Society (ICRS) Cartilage Lesion Classification System. Reprinted with permission from the ICRS Cartilage Injury Evaluation Package [9].

synovitis [4]. However, the best target to prevent the disease progress has not yet been identified [5]. In secondary

osteonecrosis, sufficient MSCs have been noted in the intra-articular region in the synovial fluid of osteoarthritic knees [6]. However, the current treatment methods involving increasing the MSCs in the intra-articular region in the synovial fluid of the arthritic knees do not address the need [7]. Hence, alternative treatment methods focusing on subchondral regions of the knee have evolved.

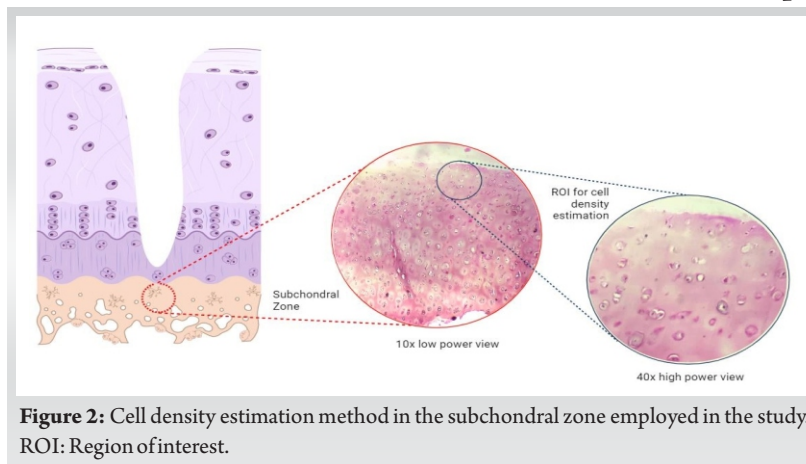
Recent clinical trials have demonstrated that implantation of MSCs in the subchondral bone of osteoarthritic knees is more effective in the long term in preventing total knee replacement compared to the intra-articular route [6,8,9]. However, the rationale behind the subchondral transplantation of MSCs lacks systematic analysis of the cell population density in knee OA. Subchondral bone is considered an integral component in the disease process [10]. Studies have noted that subchondral changes were not simply the result of the altered biomechanical loading in the degenerated joints; instead, they were considered to contribute to the cartilage injury in the early disease process [11]. Hence, this study aims to analyze the cell population density of the subchondral zone for every stage of cartilage degeneration to analyze the rationale behind this evolving treatment method for knee OA.

Materials and Methods

The study was conducted following approval of the protocol of conduct by the Institutional Ethical Committee (KMC/IEC/2023/11/3). This is an ex vivo histopathological analysis of the distal femur and proximal tibia articular specimens from the patients undergoing total knee replacement for primary knee OA between November 2023 and March 2024. We excluded samples from patients with comorbid illnesses that would affect the subchondral cell population including diabetes mellitus, chronic steroid intake, recent irradiation, and so on.

Sample preparation and grading

The saw-cut specimens from total knee replacement surgery were immediately transferred to formalin containers to aid in fixation and transported to the histopathology laboratory immediately for processing. The specimen was cut into blocks of size 1 cm³. We prepared four samples from different areas per grade of cartilage degeneration from the tibial and femoral side, respectively, for every patient included in the study. We also included four control samples from uninvolved articular areas with intact articular cartilage. Two pathologists independently graded and labeled the cartilage degeneration status in the articular surface of



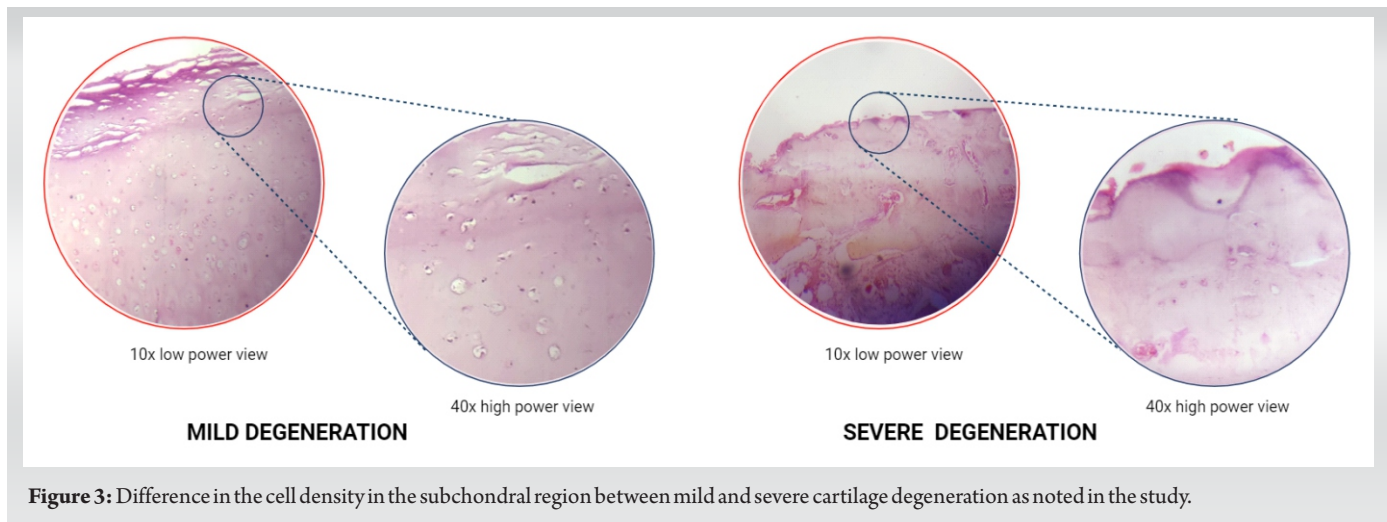


Figure 3: Difference in the cell density in the subchondral region between mild and severe cartilage degeneration as noted in the study.

the block and labeled them accordingly. Any discrepancies in grading were resolved with discussion. We used the International Cartilage Repair Society cartilage injury grading system as shown in Fig. 1. Later, the blocks were embedded in a paraffin medium and sectioned using a microtome (HistoCore BIOCUT, Leica Biosystems, Germany). The sections were then stained manually using hematoxylin and eosin stain for further analysis.

Cell density analysis

The stained slides were examined independently by two pathologists through a light microscope (LB 207, LaboMed Inc., USA) to estimate the number of cells in the subchondral region pertaining to one high-power field directly beneath the degenerated cartilage as shown in Fig. 2. Any discrepancy in cell counting was resolved with discussion.

Statistical analysis

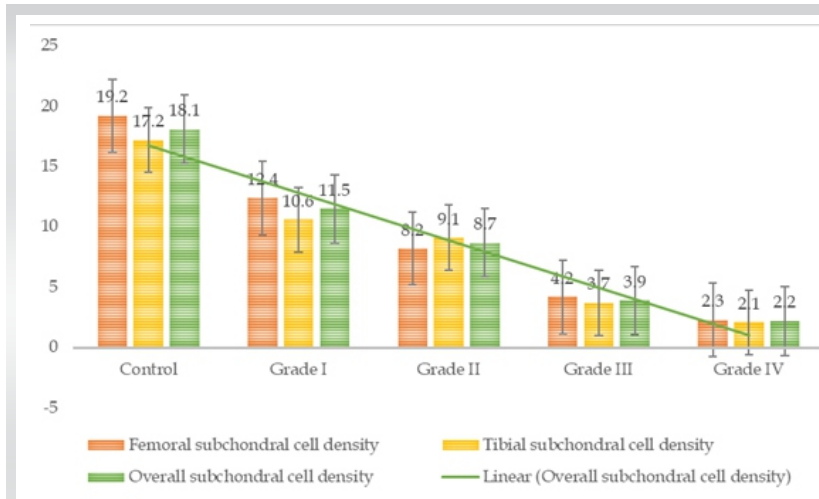


Figure 4: Subchondral cellular density in the different grades of cartilage degeneration.

We used mean and standard deviation to present continuous variables and percentage to present categorical variables. We included 4 samples from the femoral side (one for each grade of cartilage degeneration) and 4 samples from the tibial side (one for each grade of cartilage degeneration) resulting in 8 samples and 8 controls from every individual patient. We analyzed the correlation between the cell counts in the tibial and femoral subchondral zones and the grade of cartilage degeneration using Pearson's correlation test. Differences between the different grades of cartilage degeneration were analyzed using one-way analysis of variance. A $P < 0.05$ was considered statistically significant. The statistical analysis was conducted using IBM SPSS Version 25 (Armonk, USA).

Results

Characteristics of patients

We included the articular specimens from 21 patients who satisfied the inclusion criteria. The mean age of patients included in the study was $62.8 (\pm 5.4)$ years. Of the 21 patients, 12 (57.1%) were female. The mean body mass index of the included patients was $25.5 (\pm 3.4)$. We analyzed a total of 168 slides per grade of cartilage degeneration amounting to a total of 840 slides including control slides.

Cell density

The outcome of cell density from the analysis is presented in Table 1. We noted a significant association between the grade of cartilage degeneration and the subchondral cell density ($r = 0.831$, $P < 0.001$). We noted a statistically significant decrease in the cell density for every stage of cartilage degeneration compared to the

Location	Control	Mild degeneration		Severe degeneration		Control comparison
	(n=168)	Grade I	Grade II	Grade III	Grade IV	P-value
		(n=168)	(n=168)	(n=168)	(n=168)	
Femoral sample (n=84)	19.2 (\pm 2.8)	12.4 (\pm 1.4)	8.2 (\pm 1.4)	4.2 (\pm 1.4)	2.3 (\pm 1.4)	<0.001
Tibial sample (n=84)	17.2 (\pm 1.5)	10.6 (\pm 2.1)	9.1 (\pm 1.6)	3.7 (\pm 2.2)	2.1 (\pm 1.7)	<0.001
Overall (n=168)	18.1 (\pm 1.9)	11.5 (\pm 1.7)	8.7 (\pm 1.5)	3.9 (\pm 1.8)	2.2 (\pm 1.5)	<0.001
Intra-grade comparison P-value	0.548	0.432	0.524	0.411	0.618	

Table 1: Subchondral cell density noted per grade of cartilage degeneration analyzed.

control ($P < 0.001$). We also noted a significant decrease between the early and late stages of cartilage degeneration ($P < 0.001$) as shown in Table 1 and Fig. 3. We did not note any significant difference in the cell density between the tibial and femoral articular cartilage for every grade of cartilage degeneration analyzed as shown in Fig. 4. We also did not note any gender differences in the cell density loss for every grade of cartilage degeneration analyzed ($P = 0.583$).

Discussion

The integrity of the cartilage largely depends on the supporting subchondral bone and vice versa along with healthy synovial fluid and synovial covering [12]. The synovial fluid contains MSCs and their count increases with the ongoing disease process since they play a crucial role in maintaining joint homeostasis and repair [13]. They were considered to migrate from the synovial reservoir and therapies increasing the volume of MSCs involved in the repair of ongoing degenerated cartilage have been shown to provide pain relief and functional improvement in the short term [14, 15]. Although intra-articular injection has shown benefits in the short term, the long-term failures could be accounted to the limited adhesion of these progenitors to the degenerated cartilage considering the distinct variations between MSCs of bone marrow origin and synovial origin [14, 16]. Hence, alternative strategies were considered for this purpose.

Of late subchondral milieu has been the region of interest for cellular transplantation considering the rationale that the subchondral progenitor population needs to be augmented to

achieve chondral regeneration ameliorating the degenerative cascade. Results of recent clinical trials further strengthened this hypothesis thereby directing the focus of the research community to its favor. Our study adds to the literature by systematically analyzing the subchondral cellular density in every stage of cartilage degeneration to further strengthen the rationale of subchondral cellular augmentation as a management option that alters the natural history of knee OA.

The key finding of our study is that a significant decrease in the subchondral cell density with increasing grade of cartilage degeneration which could be interpreted as reduced cellular density in the subchondral zone is a feature of the advancing disease process. Further, we also noted that not only the subchondral region of the femoral side is involved but also the tibial subchondral zone is equally involved and hence cellular augmentation is needed in both the sides of the joint to address the disease process effectively. We also noted the changes in the subchondral zone equally involved without any sexual preponderance.

With the data that subchondral cellular loss accounts for the progressive degenerative disease process, transplantation of the MSCs in the subchondral milieu is advantageous in that it does not get washed by synovial fluid as in intra-articular delivery. Hernigou et al. [6, 17] in their randomized controlled trial established that the hypothesis works and has demonstrated subchondral transplantation of MSCs to reduce the incidence of total knee replacement from 4.6% noted in the intra-articular delivery to 1.3% per year at 15-year follow-up. They also noted that while only 20% ($n = 12$) of knees that received subchondral transplantation necessitated total knee replacement, 70% ($n =$

42) of knees that received intra-articular transplantation needed replacement surgery. Further, patients preferred knee with subchondral cell therapy to be more satisfactory.

The possible explanation for the noted cellular changes in the subchondral zone in OA could be accounted for by the dynamic stress-bearing nature that complements the load-bearing of the joints [18, 19]. A sclerotic and acellular subchondral zone could result in transmission of increased load to the overlying cartilage resulting in increased secondary damage and degeneration [20, 21]. The vicious cycle of cartilage damage and bone stiffness results in OA [21]. Apart from the mechanical aspects, intricate biological regulatory interplay exists between the cartilage and the subchondral zone that contributes to the healthy and pathological nature of the overall joint making them a potential target for treatment [10, 22].

The study has some limitations. First, we analyzed the cellular density and did not profile the cell populations by immunohistochemistry to quantify the progenitor cell population. However, the supporting cells in the subchondral matrix along with the MSCs were accounted for in the current study. Individual variations in the subchondral cell population exist but we tried to overcome this variability by increasing the sample and patient numbers. Although we graded the

subchondral foci based on the cartilage degeneration status, the duration of the disease process might have a role in the subchondral cellular population observed which was not taken into consideration in the interpretation of study findings. Future studies that account for the duration of the disease process along with detailed cellular profiling might enhance the understanding of the subchondral milieu in greater depth.

Conclusion

Subchondral cell density decreases significantly with increasing grade of degeneration in knee OA. Subchondral milieu warrants attention to be considered as a potential treatment focus that could alter the disease progression in knee OA.

Clinical Message

- Subchondral cell density decreases in OA
- Subchondral cell density decreases between the early and late stages of cartilage degeneration
- No difference in the cell density is noted between the tibial and femoral articular cartilage.

Declaration of patient consent: The authors certify that they have obtained all appropriate patient consent forms. In the form, the patient has given the consent for his/ her images and other clinical information to be reported in the journal. The patient understands that his/ her names and initials will not be published and due efforts will be made to conceal their identity, but anonymity cannot be guaranteed.

Conflict of interest: Nil **Source of support:** None

References

1. Muthu S. Osteoarthritis, an old wine in a new bottle! World J Orthop 2023;14:1-5.
2. Yusup A, Kaneko H, Liu L, Ning L, Sadatsuki R, Hada S, et al. Bone marrow lesions, subchondral bone cysts and subchondral bone attrition are associated with histological synovitis in patients with end-stage knee osteoarthritis: A cross-sectional study. Osteoarthritis Cartilage 2015;23:1858-64.
3. Keeling LE, Belk JW, Kraeutler MJ, Kallner AC, Lindsay A, McCarty EC, et al. Bone marrow aspirate concentrate for the treatment of knee osteoarthritis: A systematic review. Am J Sports Med 2022;50:2315-23.
4. Chahla J, Piuze NS, Mitchell JJ, Dean CS, Pascual-Garrido C, LaPrade RF, et al. Intra-articular cellular therapy for osteoarthritis and focal cartilage defects of the knee: A systematic review of the literature and study quality analysis. J Bone Joint Surg Am 2016;98:1511-21.
5. Muthu S, Korpershoek J, Novais E, Tawy GF, Hollander AP, Martin I. Failure of cartilage regeneration: Emerging hypotheses and related therapeutic strategies. Nat Rev Rheumatol 2023;19:403-16.
6. Hernigou P, Auregan JC, Dubory A, Flouzat-Lachaniette CH, Chevallier N, Rouard H. Subchondral stem cell therapy versus contralateral total knee arthroplasty for osteoarthritis following secondary osteonecrosis of the knee. Int Orthop 2018;42:2563-71.
7. Ding JB, Hu K. Injectable therapies for knee osteoarthritis. Reumatologia 2021;59:330-9.
8. Carneiro DC, de Araújo LT, Santos GC, Damasceno PK, Vieira JL, Dos Santos RR, et al. Clinical trials with mesenchymal stem cell therapies for osteoarthritis: Challenges in the

regeneration of articular cartilage. *Int J Mol Sci* 2023;24:9939.

9. Tjandra KC, Novriansyah R, Sudiasa IN, Ar A, Rahmawati NA, Dilogio IH. Modified mesenchymal stem cell, platelet-rich plasma, and hyaluronic acid intervention in early stage osteoarthritis: A systematic review, meta-analysis, and meta-regression of arthroscopic-guided intra-articular approaches. *PLoS One* 2024;19:e0295876.

10. Kasaeian A, Roemer FW, Ghotbi E, Ibad HA, He J, Wan M, et al. Subchondral bone in knee osteoarthritis: Bystander or treatment target? *Skeletal Radiol* 2023;52:2069-83.

11. Muratovic D, Findlay DM, Cicuttini FM, Wluka AE, Lee YR, Edwards S, et al. Bone marrow lesions in knee osteoarthritis: Regional differences in tibial subchondral bone microstructure and their association with cartilage degeneration. *Osteoarthritis Cartilage* 2019;27:1653-62.

12. Henrotin Y, Pesesse L, Sanchez C. Subchondral bone in osteoarthritis physiopathology: State-of-the art and perspectives. *Biomed Mater Eng* 2009;19:311-6.

13. Hügle T, Geurts J. What drives osteoarthritis?-synovial versus subchondral bone pathology. *Rheumatology (Oxford)* 2017;56:1461-71.

14. Sekiya I, Ojima M, Suzuki S, Yamaga M, Horie M, Koga H, et al. Human mesenchymal stem cells in synovial fluid increase in the knee with degenerated cartilage and osteoarthritis. *J Orthop Res* 2012;30:943-9.

15. Jones EA, Crawford A, English A, Henshaw K, Mundy J, Corscadden D, et al. Synovial fluid mesenchymal stem cells in health and early osteoarthritis: Detection and functional evaluation at the single-cell level. *Arthritis Rheum*

2008;58:1731-40.

16. Jeyaraman M, Muthu S, Jeyaraman N, Ranjan R, Jha SK, Mishra P. Synovium derived mesenchymal stromal cells (SyMSCs): A promising therapeutic paradigm in the management of knee osteoarthritis. *Indian J Orthop* 2022;56:1-15.

17. Hernigou P, Bouthors C, Bastard C, Flouzat Lachaniette CH, Rouard H, Dubory A. Subchondral bone or intra-articular injection of bone marrow concentrate mesenchymal stem cells in bilateral knee osteoarthritis: What better postpone knee arthroplasty at fifteen years? A randomized study. *Int Orthop* 2021;45:391-9.

18. Goldring MB, Goldring SR. Articular cartilage and subchondral bone in the pathogenesis of osteoarthritis. *Ann N Y Acad Sci* 2010;1192:230-7.

19. Neogi T, Nevitt M, Niu J, Sharma L, Roemer F, Guermazi A, et al. Subchondral bone attrition may be a reflection of compartment-specific mechanical load: The MOST study. *Ann Rheum Dis* 2010;69:841-4.

20. Pan J, Zhou X, Li W, Novotny JE, Doty SB, Wang L. In situ measurement of transport between subchondral bone and articular cartilage. *J Orthop Res* 2009;27:1347-52.

21. Li G, Yin J, Gao J, Cheng TS, Pavlos NJ, Zhang C, et al. Subchondral bone in osteoarthritis: Insight into risk factors and microstructural changes. *Arthritis Res Ther* 2013;15:223.

22. Hu Y, Chen X, Wang S, Jing Y, Su J. Subchondral bone microenvironment in osteoarthritis and pain. *Bone Res* 2021;9:20.

Conflict of Interest: Nil

Source of Support: Nil

Consent: The authors confirm that informed consent was obtained from the patient for publication of this case report

How to Cite this Article

Muthu S, Kandasamy R, Palanisamy S, Palaniappan AA. Subchondral Cellular Density Decreases with Increasing Grade of Cartilage Degeneration in Knee Osteoarthritis – An Ex vivo Histopathological Analysis. *Journal of Orthopaedic Case Reports* 2025 February;15(2): 00-00.

